



**REVOLUTIONIZING ENERGY
EFFICIENCY & SUSTAINIBILITY**



INTRODUCTION

We are excited to present our startup, focused on manufacturing water and heat-proofing paints and chemicals

Our unique proposition extends to AI-driven online consultancy services aimed at reducing energy consumption and fostering sustainability



PROBLEM

The increasing demand for energy and environmental concerns prompts the need for efficient water and heat-proofing solutions

Traditional methods are often insufficient and lack innovation

SOLUTION

Our startup provides high-quality, eco-friendly products designed to reduce room temperature, save electricity, and promote energy conservation

Complemented by AI chatbots, our consultancy services offer personalized advice to enhance energy efficiency





BUSINESS MODEL

We operate a manufacturing unit producing eco-friendly products and offer consultancy services on a subscription-based model

Revenue streams include product sales, consultancy fees, and potential partnerships



MARKET OPPORTUNITY

With a growing emphasis on sustainability, there's a substantial market for innovative water and heat-proofing solutions

The demand spans residential, commercial, and industrial sectors

COMPETITION



Our unique blend of eco-friendly products and AI-driven consultancy differentiates us from competitors



While others focus solely on products, our comprehensive approach sets us apart

GROWTH STRATEGY



We plan to expand our product line, enhance AI capabilities, and explore strategic partnerships to reach new markets



Marketing campaigns will highlight our commitment to innovation and sustainability



TIMELINE

Over the next two years, we aim to establish a strong market presence, expand our product range, and solidify partnerships

Continuous innovation will be pivotal to our growth



TEAM

Our team comprises seasoned professionals in manufacturing, AI development, and sustainability

Their collective expertise positions us for success in both product development and consultancy services

**Deepak Bhandari:
Architect of
an Construction
Chemicals,
Paints, Detergents and
Cleaning agents Empire,
Visionary for a Global
Future**



OUR FOUNDER AND PROMOTER

MRS. SAPNA BHANDARI, DIRECTOR OF SADEE WORLD PRIVATE LIMITED

Date of Birth: 23rd April 1978

Nationality: Indian

Mobile No.: +91-98260-11056

Languages known: English, Hindi

Bachelor of Commerce from DAVV, Indore, India

Diploma in Fashion Designing from DAVV, Indore, India

Diploma in Computer Administration

Extensive experience in painting, drawing, and portrait making

Participated in readymade garment & fashion designing exhibitions

Experience in building & construction exhibition



MRS. SAPNA BHANDARI, DIRECTOR OF SADEE WORLD PRIVATE LIMITED



Mrs. Bhandari appears to be a multi-talented individual with a diverse background in business, art, and technology



Her involvement in both Sadee World Private Limited and Indore Colour Organics Ltd. suggests a strong entrepreneurial spirit and leadership skills

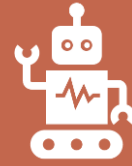


Her experience in construction and related fields is likely to be an asset to Sadee Industries



Her artistic talents and participation in exhibitions indicate a creative and innovative mindset, which could be beneficial in various aspects of the business

FUNDING



We are seeking investment to fuel initial product development, AI infrastructure, and market entry



This funding will be crucial for establishing a strong foothold in the market



Funds Requirement is mainly for following Heads



Machinery

Rs. 1500000



Raw Material

Rs. 2000000



Advertisement

Rs. 500000



Working Capital

Rs. 1500000



Total

Rs. 5500000



SUMMARY

In summary, our startup offers a unique blend of eco-friendly products and AI-driven consultancy to address the increasing demand for efficient water and heat-proofing solutions

With a solid business model, strategic growth plan, and a committed team, we aim to make a meaningful impact on energy conservation and sustainability

PROBLEM WE'RE SOLVING



Energy waste: Poor insulation results in excessive energy consumption for cooling and heating, impacting budgets and environment



Environmental degradation: Increased energy reliance contributes to greenhouse gas emissions and climate change



Lack of Innovation: Current solutions often lack technological advancement, offering limited effectiveness and customization



Limited Access to Expertise: Individuals and businesses lack access to readily available, personalized guidance on energy efficiency and sustainable building practices

VALUE PROPOSITION

**Durable and long-lasting: Minimize
maintenance needs and replacement
costs**



AI-DRIVEN CONSULTANCY SERVICES



Personalized energy efficiency recommendations: Tailored to individual building characteristics, user behavior, and climate



Predictive maintenance insights: Identify potential issues before they occur, optimizing resource allocation



Educational content and resources: Empower users to make informed decisions about energy usage and sustainable practices

UNIQUE SELLING POINT



Comprehensive Approach: We combine cutting-edge products with intelligent AI services, offering a holistic solution that tackles energy waste from multiple angles



AI-Powered Optimization: Our AI technology analyzes building data and user behavior to provide personalized recommendations and actionable insights



Accessibility and Convenience: We offer a subscription-based model for both products and consultancy, making energy efficiency solutions readily accessible and manageable

TARGET CUSTOMERS



Commercial: Property managers and facility operators aiming for cost-saving energy efficiency measures



Businesses committed to environmental responsibility and building a sustainable brand image



By understanding the specific needs and challenges of each segment, we can tailor our offerings and deliver maximum value to our customers

GREEN SCALE: INDIA'S ENERGY FUTURE



Beyond paints: Smart panels, AI sensors, regional solutions



Building bridges: Co-branded products, regional focus, online & retail presence



Green building, empowered communities, India's energy future



REVENUE STREAMS

Paint Powerhouse: High-performance, eco-friendly paints and chemicals drive initial sales and recurring subscriptions

AI Consultancy Coach: Tiered subscription plans fuel personalized energy efficiency recommendations and building optimization

Partnering for Growth: Collaborations with construction, architects, and retail unlock referral fees and market expansion

Greener Gains: Secure grants and private funding dedicated to sustainability and energy efficiency initiatives

SUSTAINABLE SCALABILITY



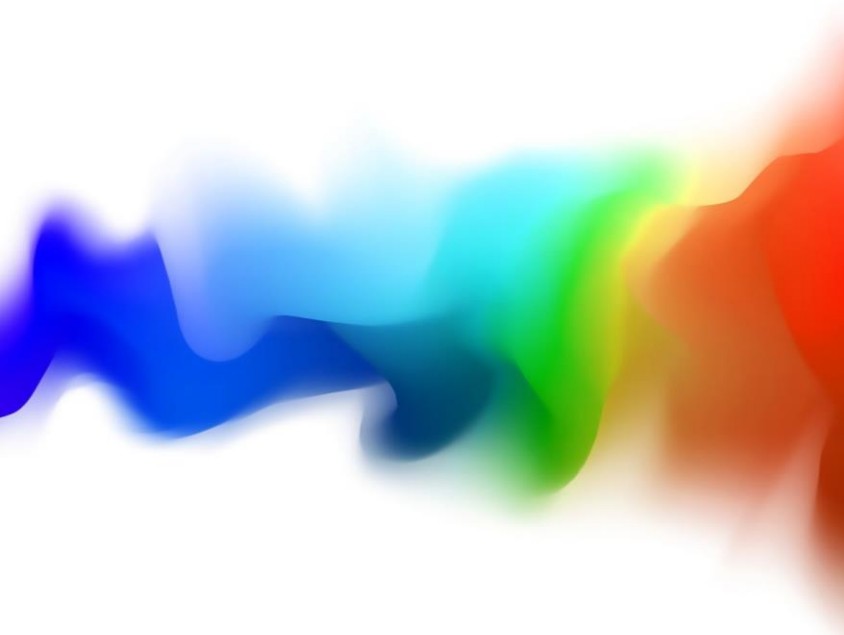
Expanding Market Reach:
Partnerships and targeted
marketing fuel growth
across sectors and regions



Data-Driven Optimization:
AI insights refine offerings,
maximize customer value,
and attract new clients



Invest in our green
revolution



COMPETITION

STARTUPS



Eco Paints India: Offers bio-based paints and coatings for thermal insulation and waterproofing



ClimaGuard India: Provides nano-ceramic coatings for buildings to reduce heat absorption and improve energy efficiency



GreenWrap Technologies: Develops sustainable building materials like hempcrete and bio-bricks with superior thermal and waterproofing properties

MSMES



Apex Paints & Chemicals: Offers a range of waterproofing and heat-resistant paints for residential and industrial applications



Thermal Shield Coatings: Specializes in roof coatings and insulation solutions for industrial and commercial buildings



EcoBuild India: Provides eco-friendly construction materials and paints, including bamboo-based panels and natural insulation options

CORPORATES



Asian Paints: Offers waterproofing and heat-resistant paints under various brands like ApcoShield and CoolShield



Berger Paints: Provides heat-reflective paints and energy-efficient building solutions under their Weatherproof and Ecomax ranges



JSW Paints: Develops high-performance waterproof and thermal insulation coatings for diverse applications

OTHERS



National Building Research Institute : A government research institute offering expertise and guidance on sustainable building practices and materials



Indian Green Building Council : Promotes green building practices and certifies buildings based on sustainability criteria



Energy Efficiency Services Limited : A government agency promoting energy efficiency through various initiatives, including building retrofitting programs

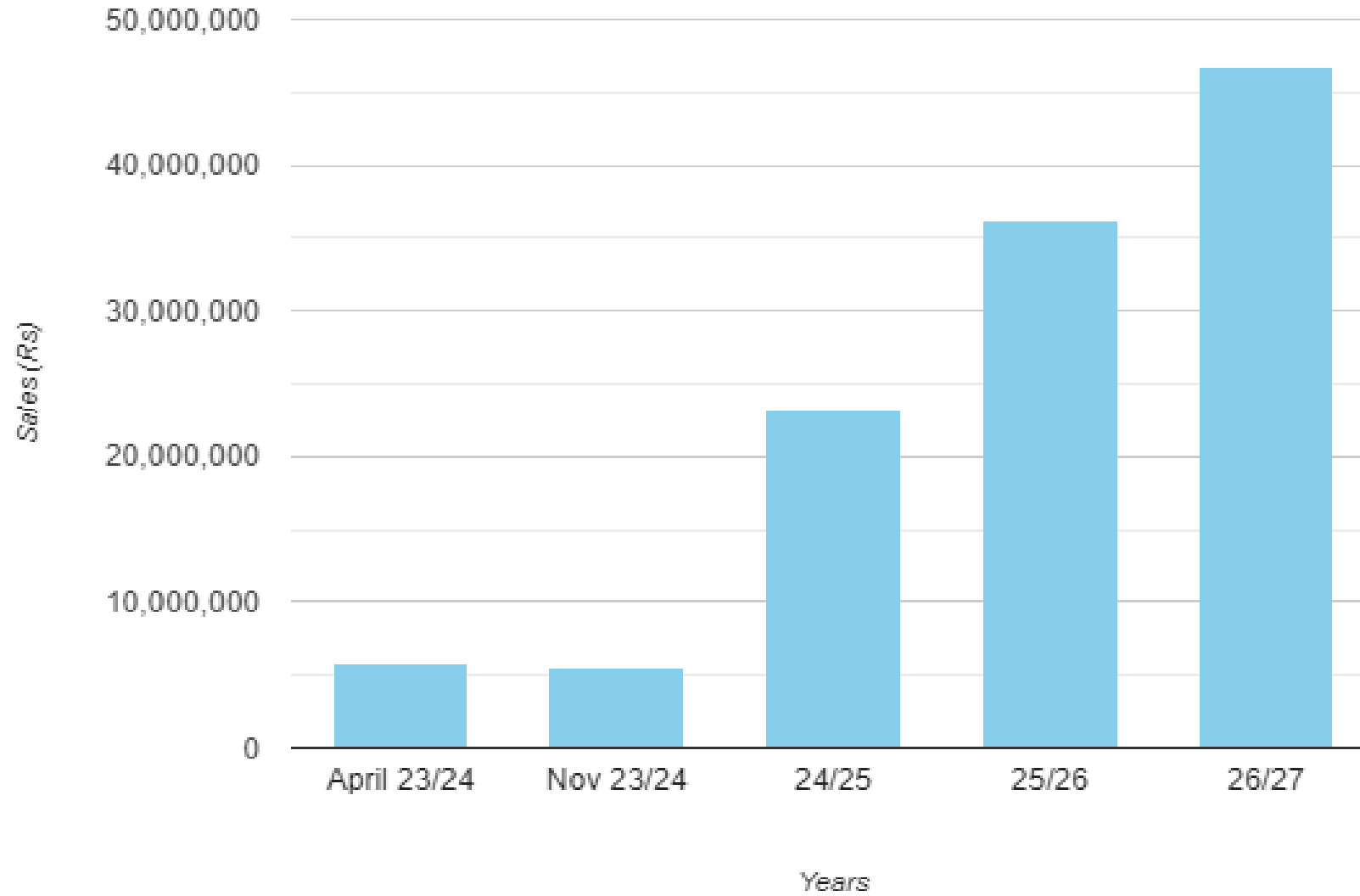
A blue-tinted image featuring a bull and a bear figurine, symbols of market trends, positioned over a financial table. The bull is on the left, and the bear is on the right. The table contains various financial data points and a 'price' column.

FINANCIALS PROJECTIONS

20.9	Free
27.1	Pharmaceuticals
11.6	Water
18.8	

price

Sadee World Private Limited Sales Growth





Sadee World Pvt. Ltd.

www.sadeeworld.com

#startupindia



Customer Care & Whatsapp No.

92291 82999, 98260 11056, Ph. : 0731 4979467

E-mail: Sadeeworld1@gmail.com Sadeeworld00@gmail.com



**Sadee World
Pvt. Ltd.**

#startupindia